

# Contents

## Mathematics

1 Exponents	6
2 Square Roots	10
3 Pythagorean Theorem	14
4 Integers	18
5 Order of Operations	22
6 Expanded Form and Scientific Notation	26
7 Ratio and Proportion	30
8 Rate	34
9 Application of Percent	38
10 Fractions	42
11 Decimals, Fractions, and Percents	46
12 Nets	50
13 Circumference and Area	54
14 Surface Area and Volume	58
15 Volume and Surface Area of Solids (1)	62
16 Volume and Surface Area of Solids (2)	66
17 Angle Properties of Intersecting Lines	70
18 Angle Properties in Parallel Lines	74
19 Angle Properties in a Triangle	78
20 Constructing Bisectors	82
21 Transformations (1)	86
22 Transformations (2)	90
23 Number Patterns	94
24 Algebraic Expressions	98
25 Equations	102
26 Data Management (1)	106
27 Data Management (2)	110
28 Probability	114

## English

1 Polar Bears – Did You Know?	120
2 Cambodia's Angkor Wat: Endangered by Tourism	124
3 Canadian Nobel Prize Laureates	128
4 Naming a Public Holiday	132
5 The History of Christmas Giving	136
6 The Remarkable Journey of Al Gore	140
7 The Wisdom of a Baseball Player: Yogi Berra's Quotes	144
8 Too Much of a Good Thing: the "Law of Unintended Consequences"	148
9 How to Talk Like a Fashion Trendsetter	152
10 Watch Out for Those Language Bloopers!	156
11 Don't Be a Dope: Drugs in Sports	160
12 One of the World's Most Published Editorials	164
13 Steven Fletcher, an Exceptional Public Servant	168
14 The Seven Sacred Teachings	172
15 Twenty Thousand "Oskar Schindlers": the Holocaust Rescuers	176
16 An Ancient Story about the Sun and the Moon	180
17 Do Aliens Exist?	184
18 Saving Lake Winnipeg	188
19 Depression in Teenagers: a Very Treatable Condition	192
20 The Start of the Sagas	196
21 Green Iceland: a Letter from Uncle Josh	200
22 Magnificent Trees	204
23 High Flight – a Poem by John Gillespie Magee, Jr.	208
24 Hannah Taylor and the Ladybug Foundation	212
25 The Truth about Water	216
26 Yoga: a Most Healthful Form of Exercise	220
27 Tips for Effective Public Speaking	224
28 A Volunteer and a Tourist?	228

## History

### Creating Canada, 1850 – 1890

1	Creating Canada	234
2	Expansion of Canada	236
3	Events and Development of Early Canada	238
4	Distinguished Canadians	240
5	Social, Economic, and Political Changes	242
6	Conflict and Cooperation (1)	244

### Canada, 1890 – 1914: A Changing Society

7	The Underprivileged in Canada	246
8	Changes in Canada	248
9	Diverse Faces of Canada	250
10	Groups in Action	252
11	Individuals Making a Difference	254
12	Conflict and Cooperation (2)	256

## Geography

### Global Settlement: Patterns and Sustainability

1	Physical Environment and Human Settlements	260
2	Global Human Settlement Patterns	262
3	Global Settlement Trends	264
4	Impact of Human Settlements	266
5	Sustainable Human Settlements	268
6	Land-use Issues	270

### Global Inequalities: Economic Development and Quality of Life

7	Quality of Life	272
8	Quality of Life – Interrelationships among Factors	274
9	Quality of Life – Correlations between Indicators	276
10	Fair Trade and Quality of Life	278
11	Organizations for Improving Quality of Life	280
12	Economic Systems and Sectors	282

## Science

1	Cell Theory	286
2	Animal and Plant Cells	288
3	Structures and Organelles in Cells	290
4	Diffusion and Osmosis	292
5	The Organization of Cells	294
6	About Systems	296
7	Systems: Input and Output	298
8	The Work Systems Do	300
9	Work, Mechanical Advantage, and Efficiency	302
10	Evolving Systems	304
11	Where on Earth Is Water?	306
12	What Is a Watershed?	308
13	The Water Table	310
14	Glaciers and Polar Ice Caps	312
15	Water Conservation	314
16	Fluids and Density	316
17	Viscosity	318
18	Buoyancy	320
19	Compressed Fluids - Hydraulics and Pneumatics	322
20	Using Fluids	324

## Answers

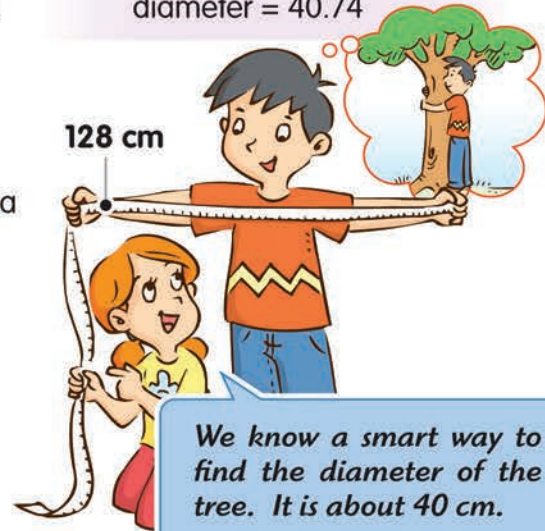
Mathematics	328
English	344
History	354
Geography	358
Science	362



## Circumference and Area

- identify the radius and diameter of a circle
- find the circumference and area of a circle
- solve problems involving circumference and area
- draw circles with given information

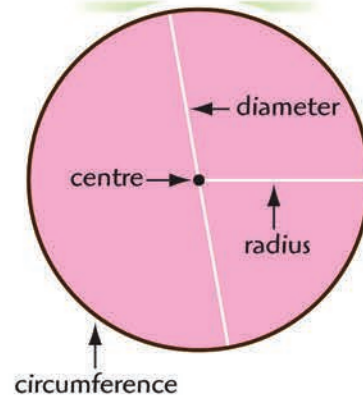
$$\begin{aligned} \text{Circumference} &= \pi \times \text{diameter} \\ 128 &= \pi \times \text{diameter} \\ \text{diameter} &= 40.74 \end{aligned}$$



Fill in the blanks with the help of the words given in the diagram.

- \_\_\_\_\_ (r):  
the length of any line segment from the centre of a circle to its edge
- \_\_\_\_\_ (d):  
the length of any line segment that passes through the centre where its endpoints are on the edge
- \_\_\_\_\_ (C):  
the perimeter of a circle
- pi* ( $\pi$ ):  
a number, 3.141592... , which is the ratio of a circle's circumference to its \_\_\_\_\_

### Circle



Draw a radius with a red pen and a diameter with a blue pen on each circle. Measure and record the lengths. Then answer the questions.

- A  $r = \underline{\hspace{2cm}}$        $d = \underline{\hspace{2cm}}$

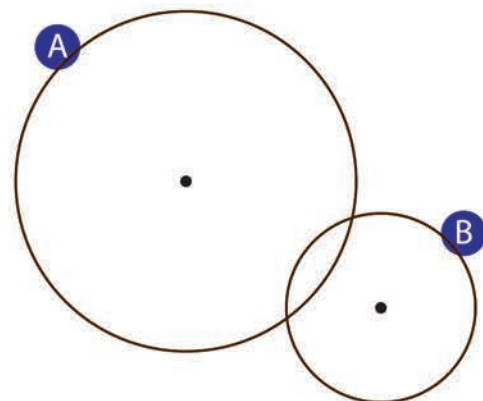
B  $r = \underline{\hspace{2cm}}$        $d = \underline{\hspace{2cm}}$

- What is the relationship between radius and diameter?

---



---





## Prepositional Adjectives

There are some adjectives that must be used with prepositions, too. They are called **prepositional adjectives**.

Example: When you're a government leader, you need to be careful about how you do things.

### E. Write the preposition that goes with each of the following adjectives.

- |                      |                 |                   |
|----------------------|-----------------|-------------------|
| 1. infamous _____    | 2. crazy _____  | 3. worried _____  |
| 4. curious _____     | 5. proud _____  | 6. popular _____  |
| 7. confident _____   | 8. guilty _____ | 9. capable _____  |
| 10. interested _____ | 11. fond _____  | 12. serious _____ |

### F. Make sentences of your own with the following prepositional adjectives.

1. angry with

\_\_\_\_\_

2. cautious about

\_\_\_\_\_

3. unafraid of

\_\_\_\_\_

4. quick at

\_\_\_\_\_

5. hesitant about

\_\_\_\_\_

6. competent in

\_\_\_\_\_







## Events and Development of Early Canada

Canada's creation and expansion involved many events and developments that impacted communities and groups. Each development had complications as the groups did not always agree.

**A. Identify which communities or groups these developments would have involved. Write the letters.**

**A** politicians

**B** First Nations

**C** settlers

**D** Chinese labourers

**E** Métis

**F** business people



### Building the Canadian Pacific Railway

The CPR was promised by the federal government to bring colonies into Canada and unify the nation. It would provide quick, safe, long-distance travel. The competition to secure the contract to build the railway was fierce. The construction was difficult and expensive, and required thousands of labourers to accomplish the task.

Communities/Groups Involved


### Settlement of the Northwest

Canada had planned to take over this enormous area since Confederation. Many people wanted to push settlement west after Confederation and put pressure on their leaders to make it happen. Control of this area was necessary as it would allow passage to the other side of the country, keeping it out of the hands of the Americans. The government had to negotiate with the people who resided in these lands.

Communities/Groups Involved


### Creation of the North West Mounted Police

They patrolled Manitoba and the region that would become Alberta and Saskatchewan. They were few but effective. Their duties included aiding settlers, helping First Nations peoples transition to reserves, resolving small disputes, and fighting in small wars. The government could not have controlled such a vast space without them.

Communities/Groups Involved



# Physical Environment and Human Settlements

Various factors of the physical environment affect people's decision of settling in a place. Many of these factors also shape human settlements and form patterns. There are three main types of settlement patterns: linear, scattered, and clustered.

## A. Circle the correct words to show how physical environments affect human settlements.

### Landforms



- People tend to settle in low-lying areas with flat land that is ideal for agricultural purposes.
- Rugged mountains are **favourable** / **not favourable** for human settlements.

### Soil Types



- Different types of soil are suitable for growing different crops, which is a crucial factor that **miners** / **farmers** have to consider.

### Close Proximity to Waterways



- Settlements close to oceans have access to fish as a **power** / **food** source.
- Being near bodies of water also favours the transportation of people and goods.
- Settlements are built near **freshwater** / **saltwater** sources such as rivers and lakes for easy access to water for daily use and irrigation.

### Availability of Natural Resources



- **Wood** / **Oil** can be used to build houses.
- Coal and **metal** / **oil** can be the power sources for homes, farms, and factories.
- Other natural resources provide job opportunities in **tourism** / **mining**.

### Climate



- Most people prefer a **cold** / **mild** climate to an extreme one.
- This is a particularly important factor for those who rely on **farming** / **manufacturing** to make a living.

### Vegetation

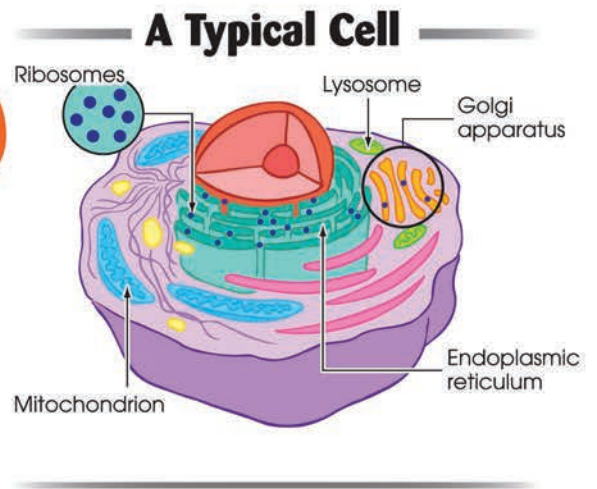


- An area with lots of hardwood trees provides **leaves** / **wood** for building houses.
- An area covered by large areas of **grassland** / **shrubs** is ideal for raising farm animals.



**B. The organelles of the cell have specific forms and functions. Use the diagram and the given words to complete the information chart.**

canals    cellular respiration    recycle    toxic  
 proteins    oval-shaped    cytoplasm    sac-like



**The Organelles of the Cell**

1. R\_\_\_\_\_ (Form: free or attached)  
 Function: assemble \_\_\_\_\_
  
2. M\_\_\_\_\_ (Form: \_\_\_\_\_)  
 Function: make energy through photosynthesis or \_\_\_\_\_
  
3. Endoplasmic reticulum (Form: \_\_\_\_\_)  
 Function: carry materials through the \_\_\_\_\_
  
4. G\_\_\_\_\_ a\_\_\_\_\_ (Form: stacked like pancakes)  
 Function: packages proteins and \_\_\_\_\_ materials
  
5. Lysosome (Form: \_\_\_\_\_)  
 Function: contain proteins that break down and \_\_\_\_\_ larger molecules

**Science Fact**

The number of mitochondria a cell contains seems to be related to the type of cell in which they are found. Cells that need a lot of energy to perform their job typically have a high number of mitochondria.

